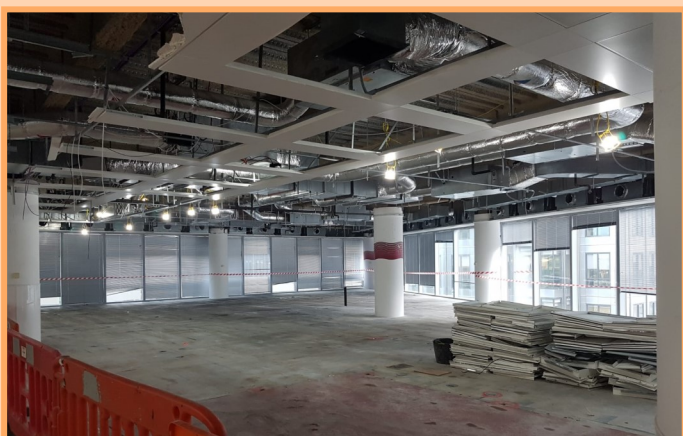


LATEST PROJECTS

25 North Colonnade, Canary Wharf - LIVE PROJECT  
 Client: Blackstone Property Management



We are nearing the end of our 20 week Strip Out and Enabling programme as Principal Contractor at 25 North Colonnade. The site is a 16 storey office building, covering 32,000 m<sup>2</sup>, built in the mid-1990s.



It has been a very successful project; having recently been awarded a Performance Beyond Compliance Certificate by the Considerate Constructors Scheme. Our Health and Safety (H&S) standards were marked as “exceptional”, scoring a very impressive 9 out of 9 in this category and proving our ongoing commitment to surpassing standards. The auditor was particularly impressed that we are able to keep our workforce engaged in supporting H&S campaigns.

The works comprise of the internal Soft Strip of the building back to shell, including the removal of existing services; 104 tons of Roof Top Plant; a 7 ton Generator; and associated pipework and pumps. It was not possible to use a crane for the waste removal from the Roof, so each element was broken down into manageable fragments by a team of skilled Operatives, using specialist techniques and equipment, and carried out, via a carefully planned egress route through the building to the waste extraction point. Due to the building location, we implemented a robust Traffic Management Plan and introduced Noise Assessments to regularly check that were not adversely affecting the local community and businesses.



OTHER NEWS

KpH Group to Compete in CRASH Charity Dragon Boat Race!

KpH Group are supporting the charity, CRASH, by taking part in The Construction Industry Dragon Boat Challenge in June 2019. Our staff are so excited to be part of this event and have already picked our team name (taking inspiration from our “KpH”); we are now Kevin’s Pirate Heroes! We are on a steep learning curve, many of us having to overcome a fear of water as well as learn how to paddle, but we are spurred on by the fact that it is in aid of such a worthy cause.

CRASH is a unique, practical charity that assists homelessness and hospice charities with construction related projects, creating places that care for people.

We have started fundraising, so if you would like to help us, please donate any spare pennies to:

<https://uk.virginmoneygiving.com/Team/KpHGroupLtd>



New Business Roles

Andrew Kemp joined our very busy Project Delivery Team as an Operations Manager in 2018. He has extensive experience working as an Estimator and Site Manager in the Construction industry; mainly on CAT A and B projects. Within his new role, Andrew is responsible for assessing potential risks relating to the works; ensuring compliance with health, safety, environmental and CDM requirements; monitoring quality performance; attending progress meetings and liaising affectively with the Client. With the expansion of our Project Delivery Team, we will be able to grow our business capabilities without compromising our quality of service.



New Accreditations

We have just renewed our Gold Constructionline Accreditation!



Are you interested in booking a FREE CPD Seminar?

If you would like our experienced team to present you with a free lunchtime CPD (Continuing Professional Development) Seminar on Understanding the Approach to Strip Out and Enabling Works at your premises; please contact Emily Clark on 01883 346604 or [emily.clark@kph.co.uk](mailto:emily.clark@kph.co.uk) for further information.



If you think we can assist on any current or upcoming works, please call our Division Manager, Lyndsey West, on 01883 346604.